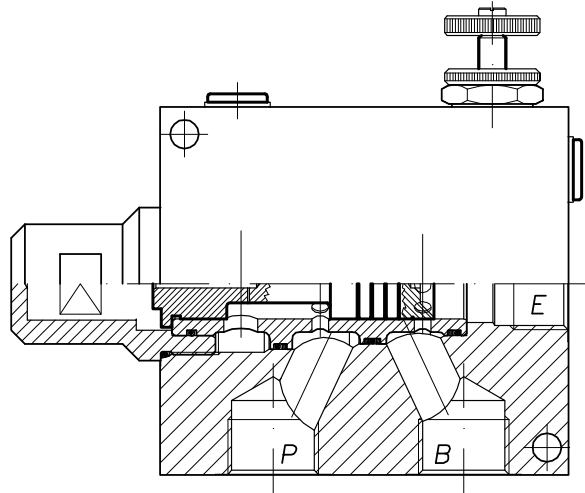
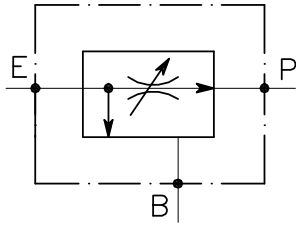


# VRF-3V-...

REGOLATORE DI FLUSSO PRIORITARIO CON ECCEDEXENZA IN  
 PRESSIONE  
 PRIORITY FLOW CONTROL COMBINATION STYLE

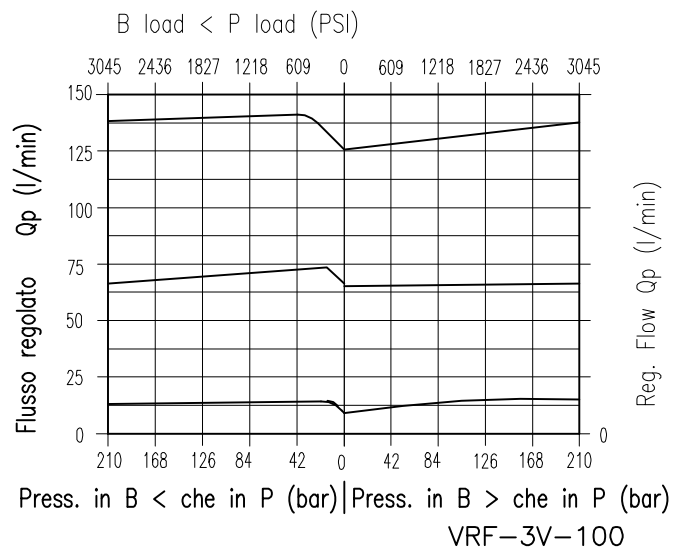
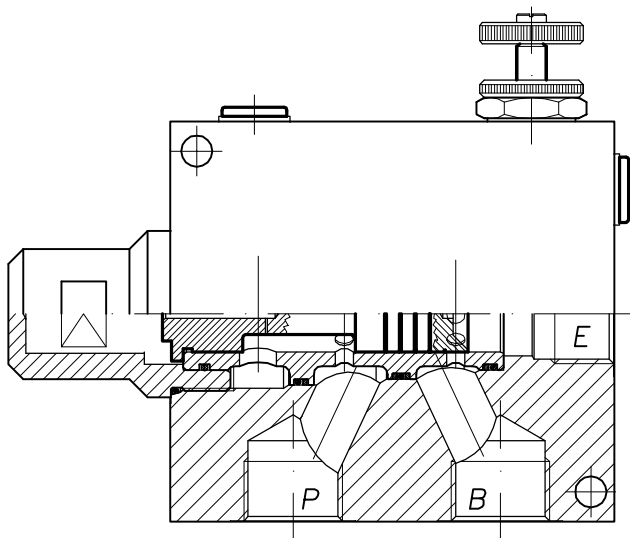


## CARATTERISTICHE

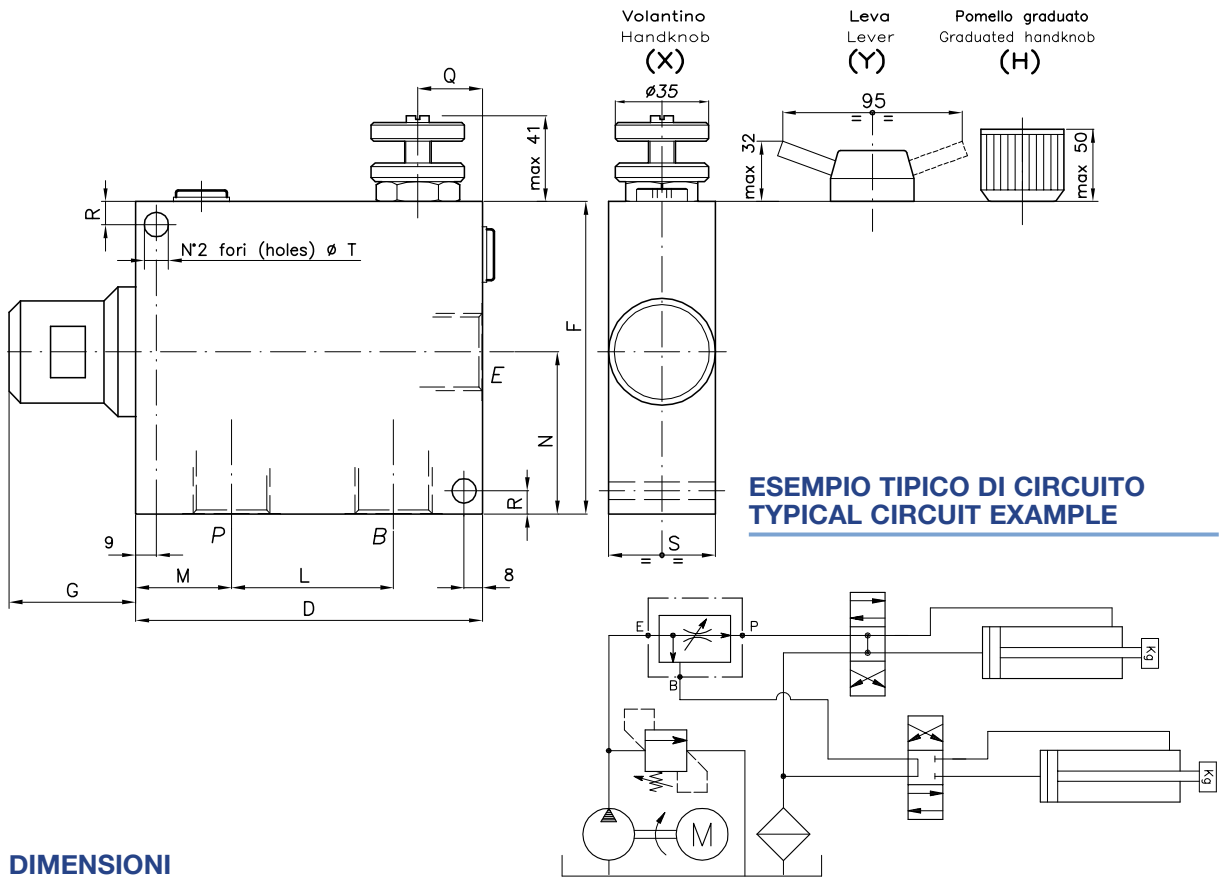
Luce nominale min/max	<b>DN 14/16</b>
Portata min/max	<b>10/380 l/min - 2.6/100 GPM</b>
Pressione di lavoro max.	<b>210 bar - 3045 PSI</b>
Temperatura ambiente	<b>-30°C + 50°C</b>
Temperatura olio	<b>-30°C + 80°C</b>
Filtraggio consigliato	<b>50 micron</b>
Peso	<b>3.624 Kg. 1" GAS</b>
Peso	<b>3.478 Kg. 1" - 1/4 GAS</b>

## PERFORMANCE

Min/max rated size
Min/max flow-rate
Max working pressure
Room temperature
Oil temperature
Recommended filtration
Weight
Weight



Viscosità olio 46 cSt a 50°C  
 Oil viscosity 46 cSt at 50°C



**ESEMPIO TIPICO DI CIRCUITO  
TYPICAL CIRCUIT EXAMPLE**

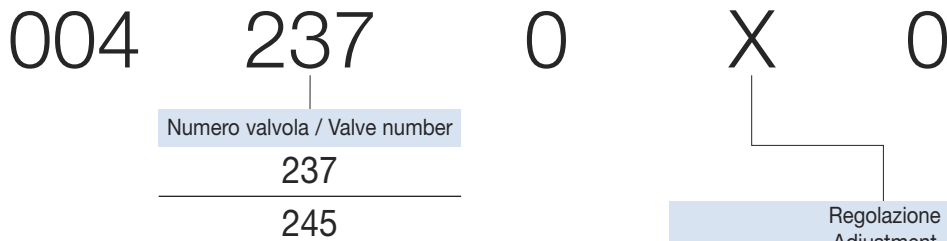
**DIMENSIONI  
DIMENSIONS**

NUMERO VALVOLA VALVE NUMBER	D	F	G	L	M	N	Q	R	S	T	Attacchi Port size E-P-B GAS (BSPP)	Luce nominale Rated size DN	QP l/min - GPM	QE l/min - GPM
237	150	135	55	70	41.5	70	28	10	60	10.5	1"	14	150-40	250-66
245	150	135	55	70	41.5	70	28	10	60	10.5	1" 1/4	16	210-55	380-100

QE = Portata max in entrata "E" - l/min  
QE = Max admitted inlet flow "E" - l/min

QP = Portata max in uscita prioritario "P" - l/min  
QP = Max delivery in priority "P" - l/min

**CODICE DI ORDINAZIONE  
HOW TO ORDER**



X	Volantino - Handknob
Y	Leva - Lever
H	Pomello graduato - Graduated handknob
Z	Volantino in alluminio - Aluminium handknob